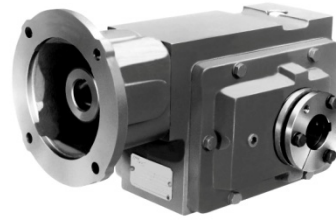


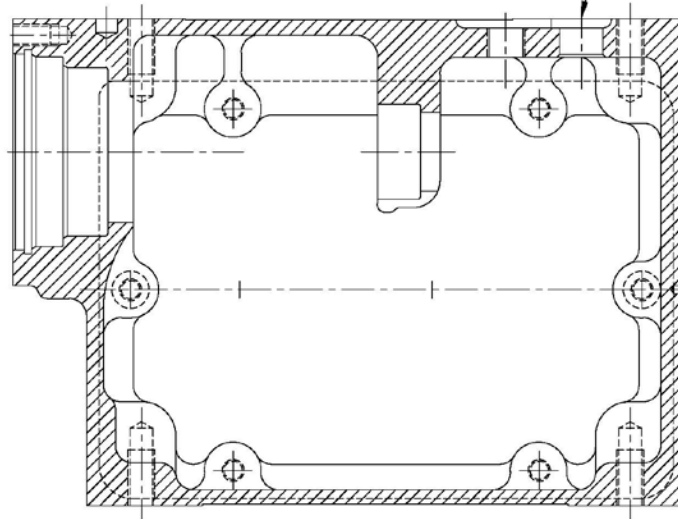
MASTER[®] COMBOGEAR



PLUGGING COMPRESSION CHAMBER HOLE INSTRUCTIONS (ALL SIZES)

ComboGear units prior to September 2003 were supplied with a compression chamber. Through extensive testing it was determined that the reducer did not need a compression chamber for proper ventilation. Please follow these instructions in order to properly retrofit units manufactured prior to September 2003.

DRILL EXISTING COMPRESSION CHAMBER HOLE
23/32" DIA. DRILL THRU
1/2-14 NPSF TAP THRU
INSTALL (1) 50197 1/2" SQ HD PIPE PLUG



Warning

To ensure that the unit is not damaged during operations, all metal shavings must be removed after drilling. Refill unit with Mobil SHC634 standard lubricant prior to reinstalling.



3300 Tenth St. / Columbus, In 47201 / (888) 616-1094
www.master-pt.com